

# CipherLab User Guide

## Installation of USB Virtual COM

Accessory Part No. 308

Version 2.20



Copyright © 2005~2009 CIPHERLAB CO., LTD.  
All rights reserved

The software contains proprietary information of CIPHERLAB CO., LTD.; it is provided under a license agreement containing restrictions on use and disclosure and is also protected by copyright law. Reverse engineering of the software is prohibited.

Due to continued product development this information may change without notice. The information and intellectual property contained herein is confidential between CIPHERLAB and the client and remains the exclusive property of CIPHERLAB CO., LTD. If you find any problems in the documentation, please report them to us in writing. CIPHERLAB does not warrant that this document is error-free.

No part of this publication may be reproduced, stored in a retrieval system, or transmitted in any form or by any means, electronic, mechanical, photocopying, recording or otherwise without the prior written permission of CIPHERLAB CO., LTD.

For product consultancy and technical support, please contact your local sales representative. Also, you may visit our web site for more information.

The CipherLab logo is a registered trademark of CIPHERLAB CO., LTD.

All brand, product and service, and trademark names are the property of their registered owners.

The editorial use of these names is for identification as well as to the benefit of the owners, with no intention of infringement.

**CIPHERLAB CO., LTD.**

Website: <http://www.cipherlab.com>

# IMPORTANT NOTICES

---

## FOR USA

This equipment has been tested and found to comply with the limits for a **Class B** digital device, pursuant to Part 15 of the FCC Rules. These limits are designed to provide reasonable protection against harmful interference in a residential installation. This equipment generates, uses and can radiate radio frequency energy and, if not installed and used in accordance with the instructions, may cause harmful interference to radio communications. However, there is no guarantee that interference will not occur in a particular installation. If this equipment does cause harmful interference to radio or television reception, which can be determined by turning the equipment off and on, the user is encouraged to try to correct the interference by one or more of the following measures:

- ▶ Reorient or relocate the receiving antenna.
- ▶ Increase the separation between the equipment and receiver.
- ▶ Connect the equipment into an outlet on a circuit different from that to which the receiver is connected.
- ▶ Consult the dealer or an experienced radio/TV technician for help.

This device complies with Part 15 of the FCC Rules. Operation is subject to the following two conditions: (1) This device may not cause harmful interference, and (2) this device must accept any interference received, including interference that may cause undesired operation.

## FOR CANADA

This digital apparatus does not exceed the Class B limits for radio noise emissions from digital apparatus as set out in the interference-causing equipment standard entitled "Digital Apparatus," ICES-003 of Industry Canada.

This device complies with Part 15 of the FCC Rules. Operation is subject to the following two conditions: (1) This device may not cause harmful interference, and (2) this device must accept any interference received, including interference that may cause undesired operation.

Cet appareil numérique respecte les limites de bruits radioélectriques applicables aux appareils numériques de Classe B prescrites dans la norme sur le matériel brouilleur: "Appareils Numériques," NMB-003 édictée par l'Industrie.

# RELEASE NOTES

---

Version	Date	Notes
2.20	Apr. 09, 2009	New driver versions 5.3~5.4 <ul style="list-style-type: none"><li>▶ Modified: Getting Started — removed</li><li>▶ Windows Update for Drivers — removed</li></ul>
2.11	Mar. 25, 2008	New cover design and font Verdana applied <ul style="list-style-type: none"><li>▶ Modified: Features — remove certification VCCI and CNS</li></ul>
2.10	Nov. 26, 2007	New Word template applied
2.00	Apr. 12, 2007	New release
1.03	Mar. 03, 2007	▶ Supports Windows Vista driver
1.02	Mar. 24, 2005	▶ Modified: add certification marks on the “Statements” page
1.01	Mar. 18, 2005	▶ Modified: specify “Windows 98se” instead of “Windows 98” ▶ Modified: section 4 — replace the last screenshot
1.00	Mar. 18, 2005	Official release

# CONTENTS

---

- IMPORTANT NOTICES ..... - 3 -**
  - For USA ..... - 3 -
  - For Canada ..... - 3 -
- RELEASE NOTES ..... - 4 -**
- INTRODUCTION ..... 1**
  - Overview..... 2
  - Interface Options..... 3
  - Features..... 3
- INSTALLING USB VIRTUAL COM DRIVERS ..... 5**
  - Install USB Virtual COM Drivers..... 5
  - Check Existing Driver Version..... 10
  - Remove Existing Setup File & Drivers..... 11
    - First, Remove Setup File..... 11
    - Secondly, Remove Drivers..... 12
- USING USB VIRTUAL COM ..... 15**
  - Connect Your USB Device..... 15
  - Find out Available COM Ports ..... 17



# INTRODUCTION

---

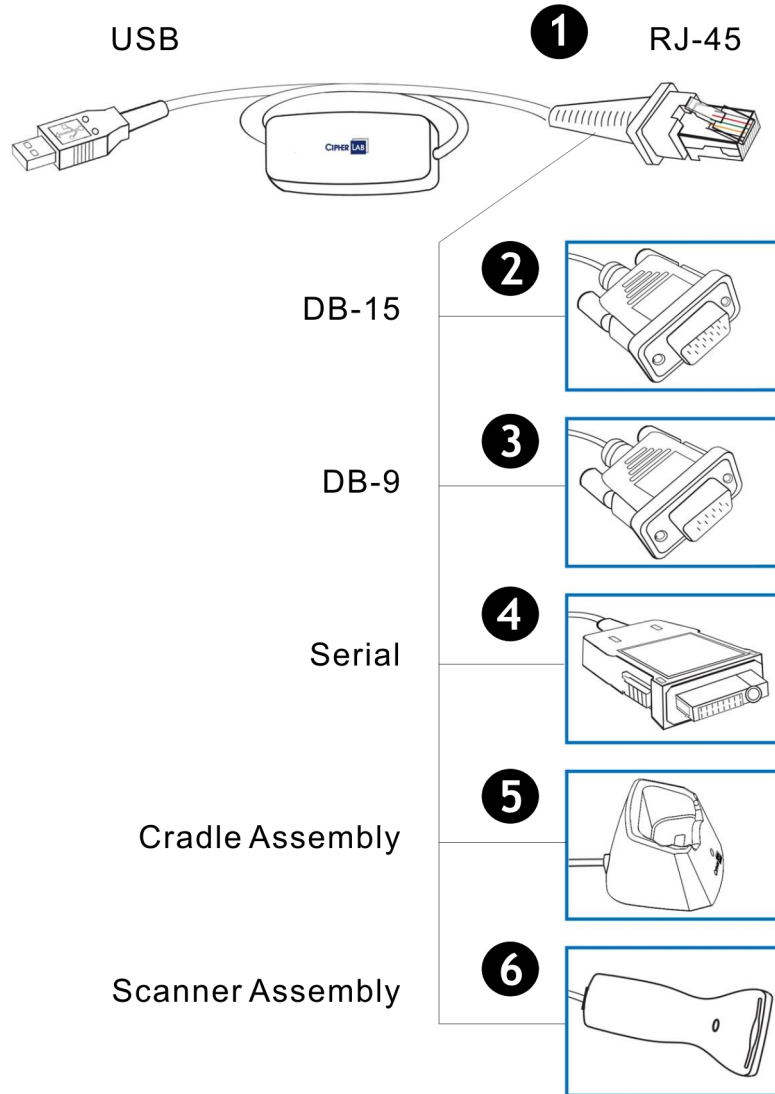
The 308 USB Virtual COM Interface provides the USB interface to a rich choice of CipherLab products, such as the 1000 Series Barcode Scanners, 8300 Series Mobile Computers, and so on.

This product fully complies with USB 2.0 specification and supports Windows Vista/XP/Me/98se. It ships with a disk containing the associated driver and this installation guide. To avoid any improper disposal or operation, please read this document thoroughly before use.

Thank you for choosing CipherLab products!

## OVERVIEW

For connecting your legacy CipherLab product to the USB port of computer, the 308 Virtual COM Interface provides a complete yet flexible solution.





## INTERFACE OPTIONS

Depending on your requirements, you may place a specific order so that the 308 Virtual COM Interface serves as a converter for

Cable Type	Interface Options	For Use with CipherLab Products
Detachable Cable	USB to RJ-45	1090+, 1100, 1105, 1200 Scanners
	USB to DB-15 (male)	3666 Bluetooth Cradle
	USB to DB-9 (male)	
	USB to CipherLab Serial	8000, 8300, 8500 Cradles; 8300 Mobile Computer
Cable Assembly	USB to 8000 Cradle	8000 Cradle
	USB to 1000 Scanner	1000 Scanner

## FEATURES

- ▶ Compliant with USB 2.0 specification
- ▶ Supports Windows Vista/XP/2000/Me/98se drivers
- ▶ Truly plug-and-play
- ▶ Provides rich interface options for customization
- ▶ Worldwide certification – CE, FCC, C-tick and MIC

Note: Drivers for Windows Me/98se are not included in the driver package. Please contact our sales representative for drivers.



# INSTALLING USB VIRTUAL COM DRIVERS

---

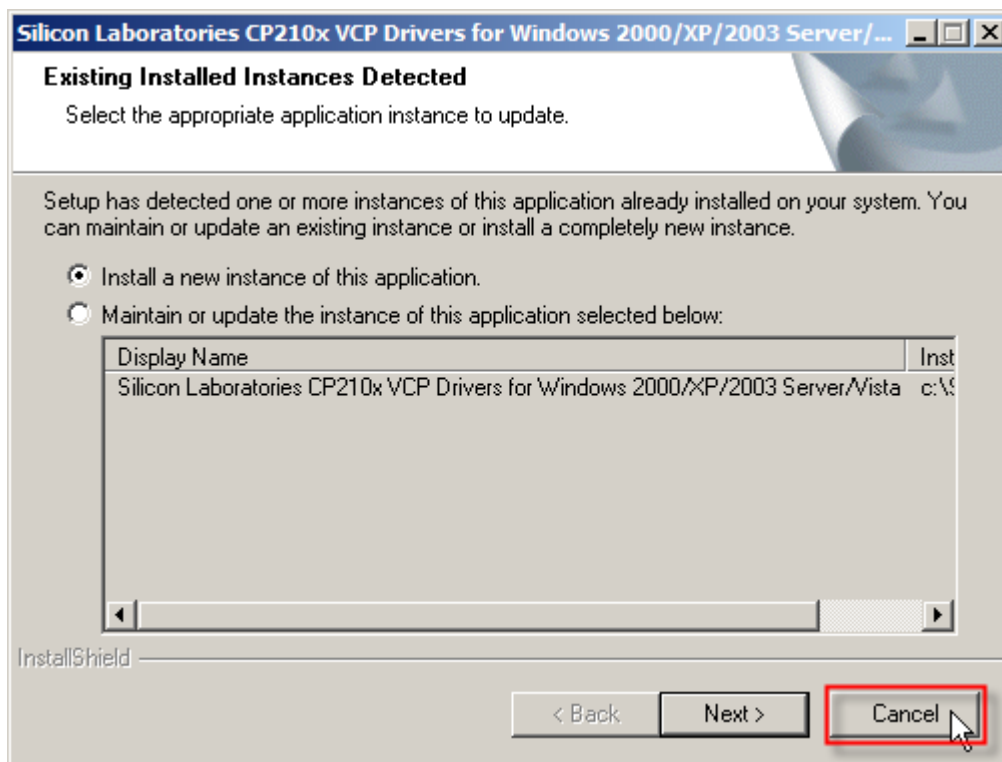
If you are using the 308 Virtual COM Interface for the first time, you must install its driver first. Driver version 5.3 or later is required. After that, the 308 Virtual COM Interface is a plug-and-play device for Windows Vista/XP/2000/Me/98se.

## INSTALL USB VIRTUAL COM DRIVERS

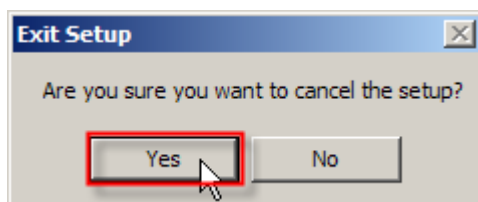
1) Run the setup file (CP210x\_VCP\_Win2K\_XP\_S2K3.exe).

The InstallShield Wizard will guide you through how to install drivers for Windows.

However, if there is an existing setup file installed on your computer, you will see the following dialog box. Click [Cancel] to exit setup.

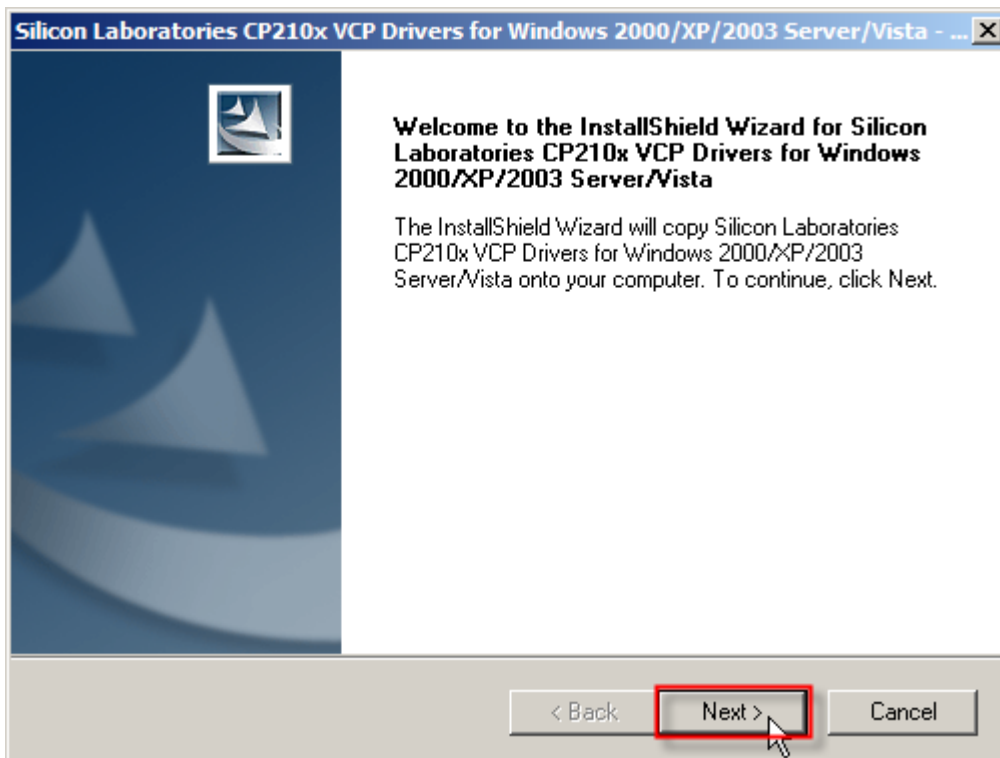


Click [Yes] to cancel the setup.

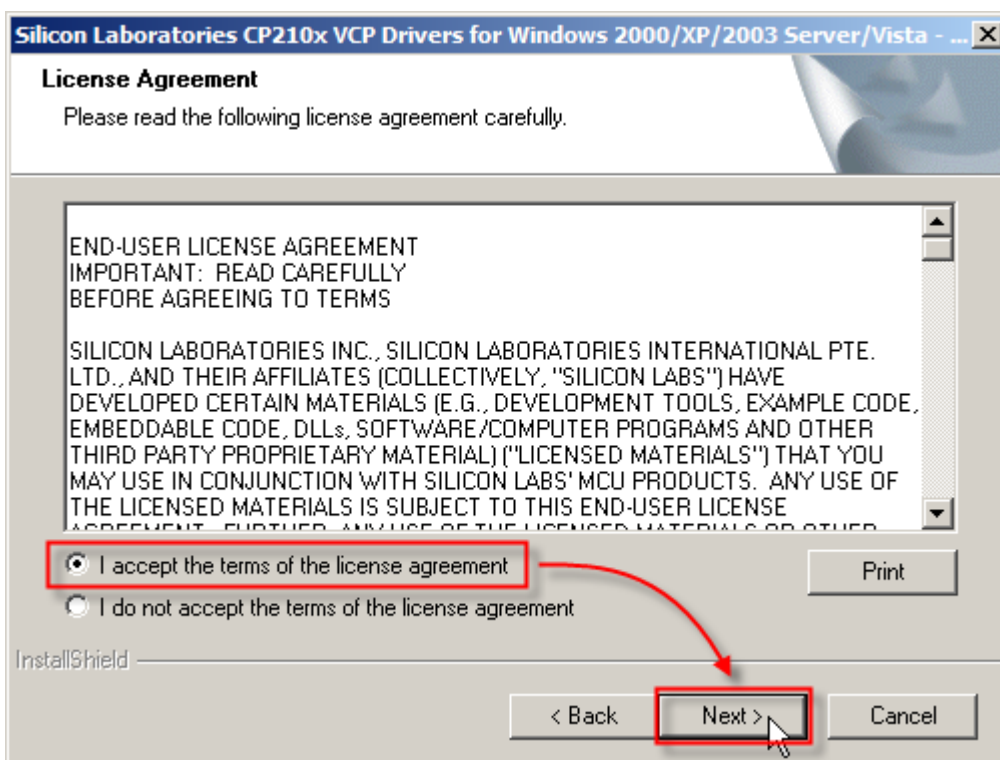


Refer to [Check Existing Driver Version](#) and find out if the driver version is 5.3 or later.

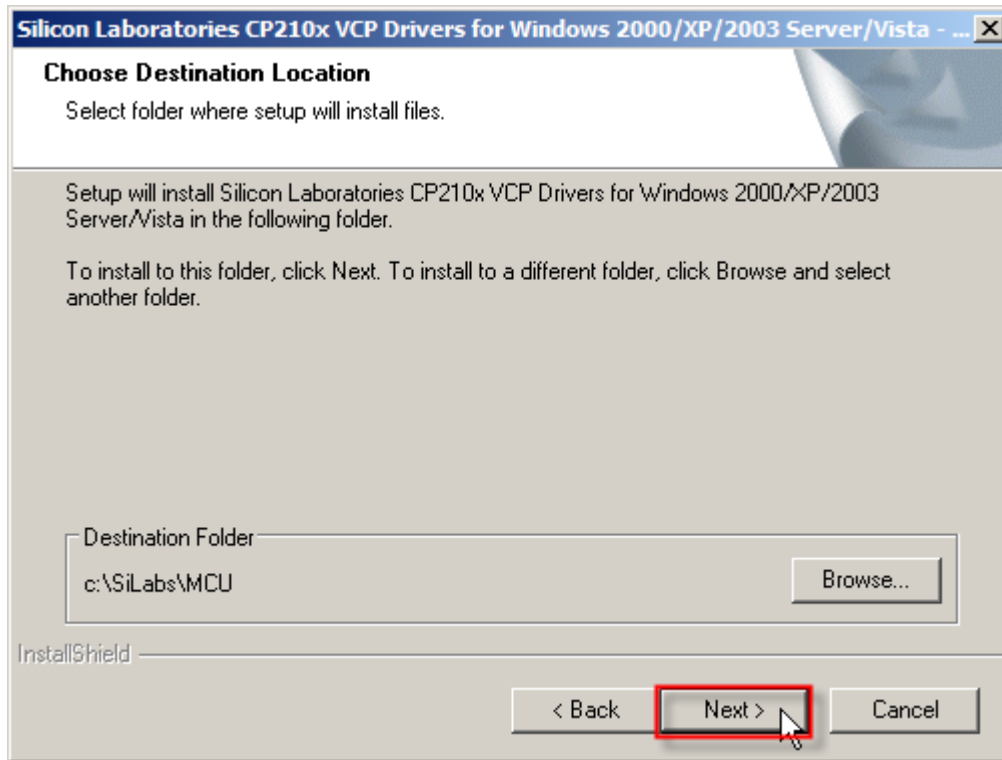
- 2) Click [Next] to continue.



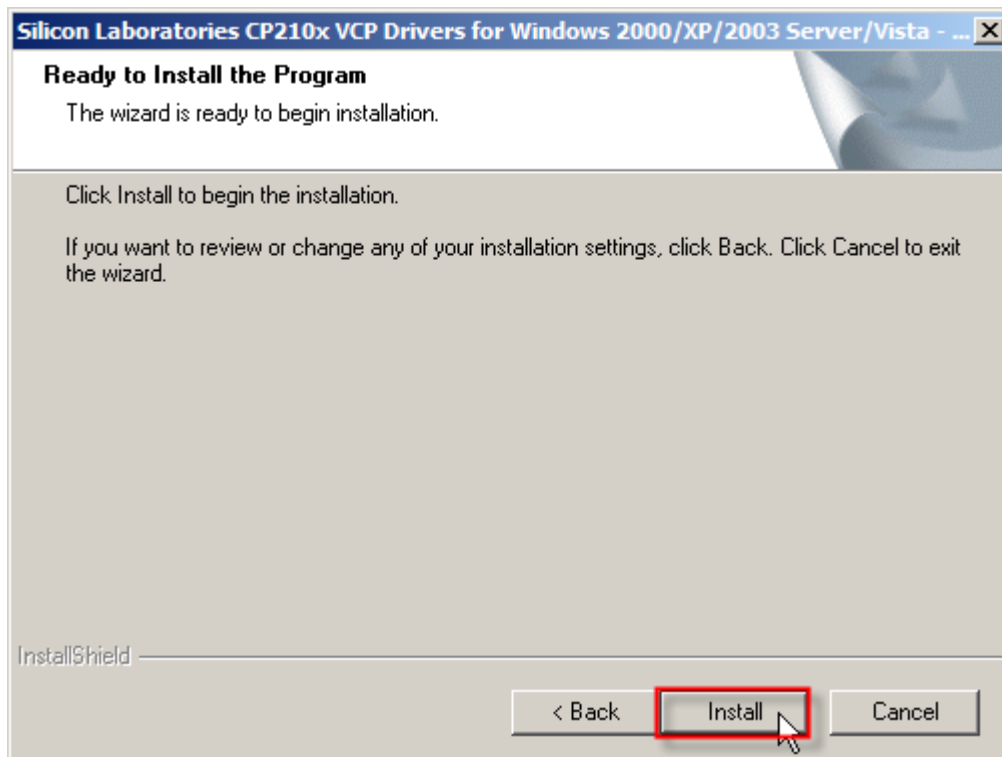
- 3) Read the License Agreement and select to accept the terms. Click [Next] to continue.



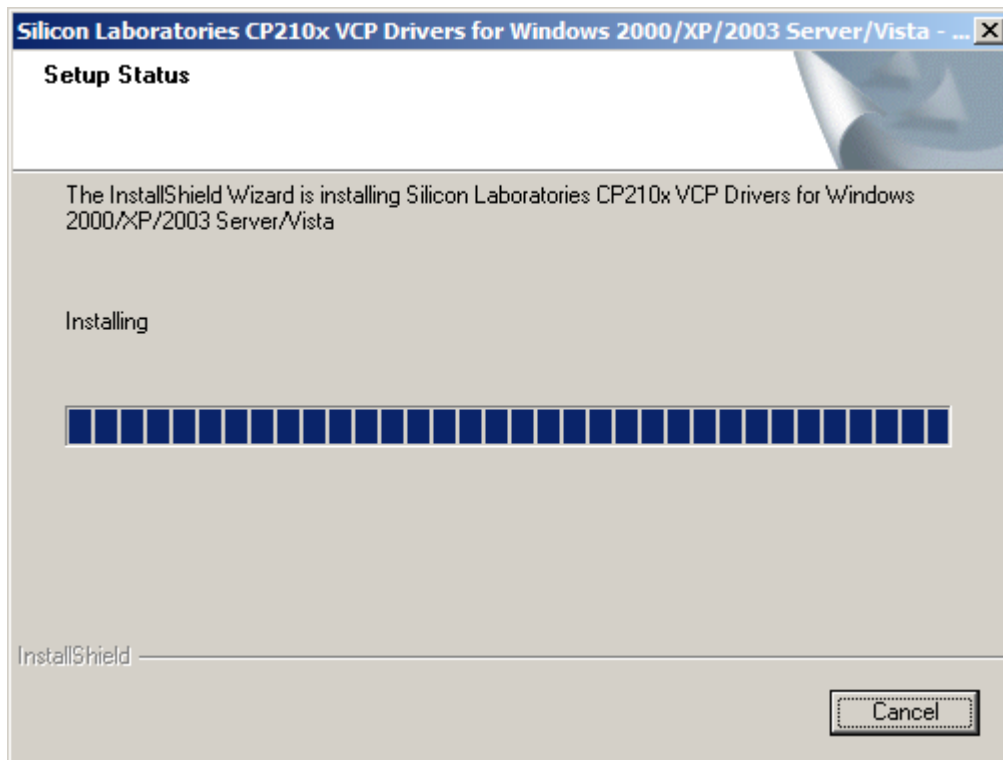
- 4) If you wish to change the destination location, click [Browse...] on the right. Otherwise, click [Next] to continue.



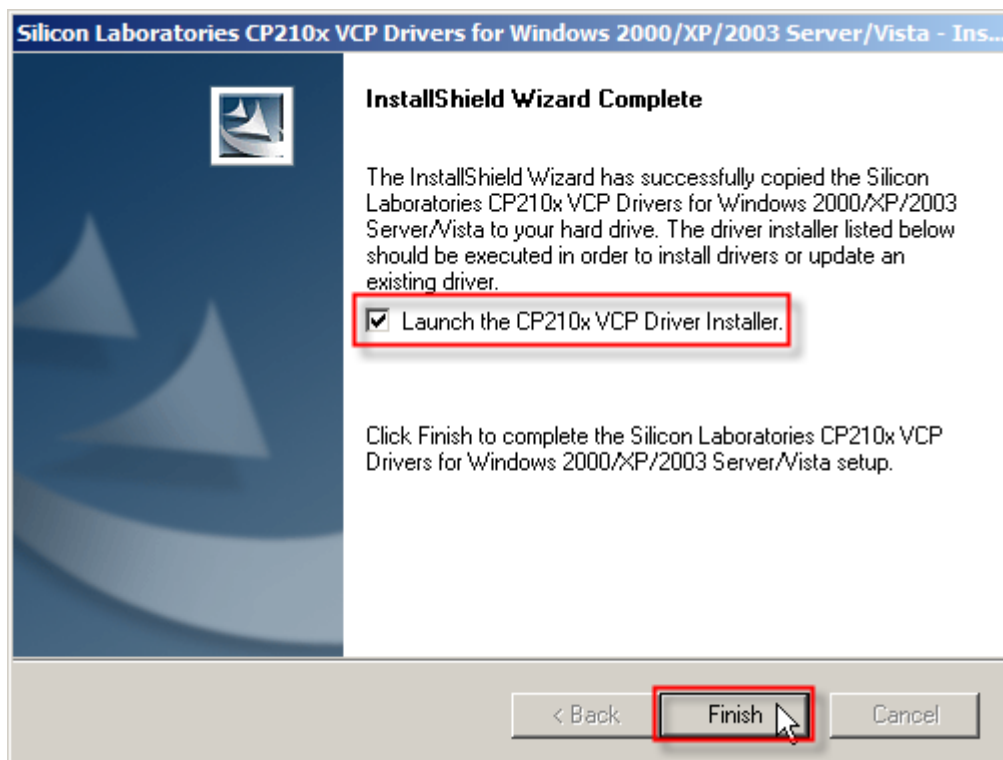
- 5) Click [Install] to begin the installation.



- 6) Wait for several seconds while installing drivers (= copying files to your hard drive).

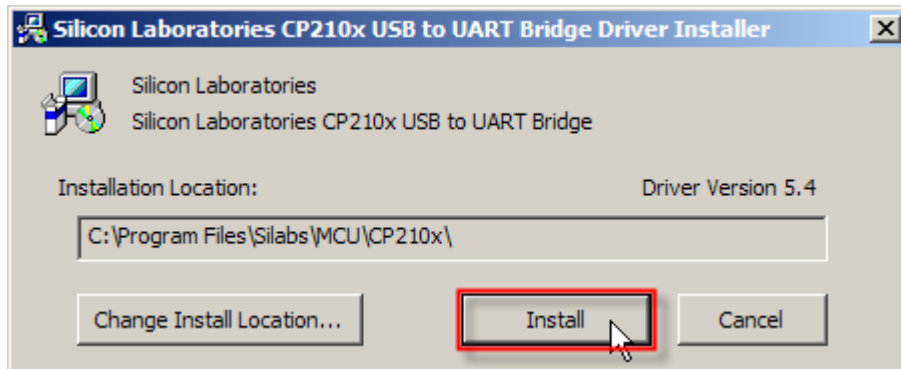


- 7) Click [Launch the CP210x VCP Driver Installer] to install drivers or update an existing driver. Click [Finish] to complete the setup. Otherwise, you can run the installer later from "C:\SiLabs\MCU\CP210x\Windows\_2K\_XP\_S2K3\_Vista" (the default install directory).

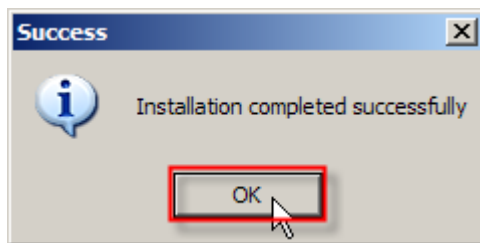


8) It will install "CP210x USB to UART Bridge Driver" now.

If you wish to change the destination location, click [Change Install Location...]. Otherwise, click [Install] to continue.

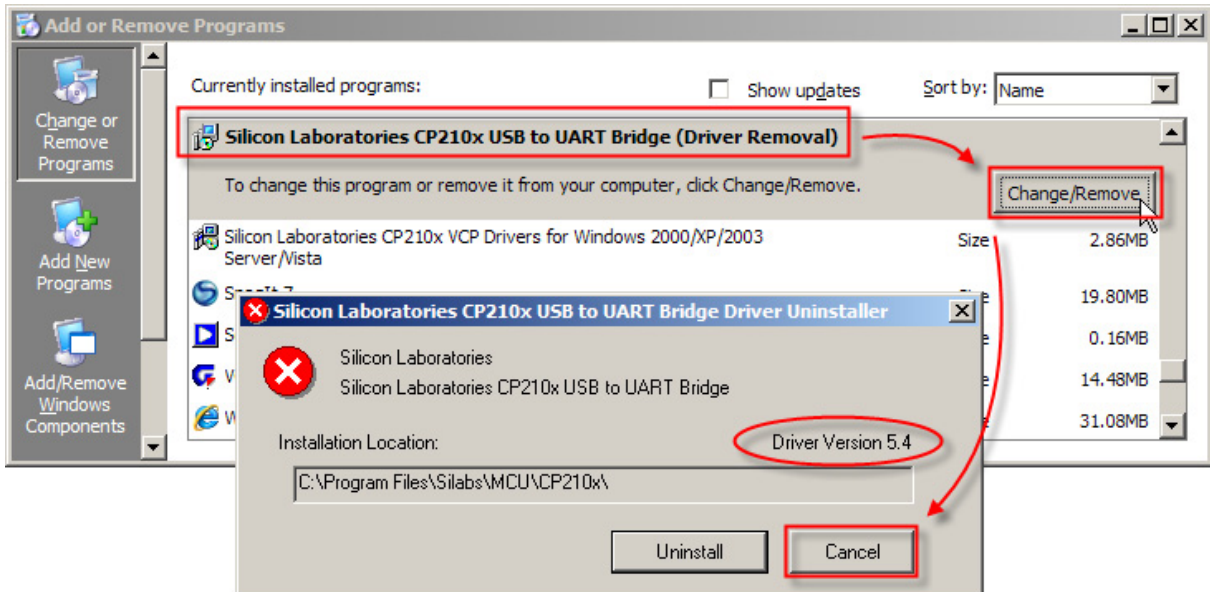


9) Wait for several seconds while installing drivers. Click [OK] to exit the wizard.



## CHECK EXISTING DRIVER VERSION

Go to **Start | Control Panel | Add or Remove Programs**. If you have installed the driver before, it will be on the program list.



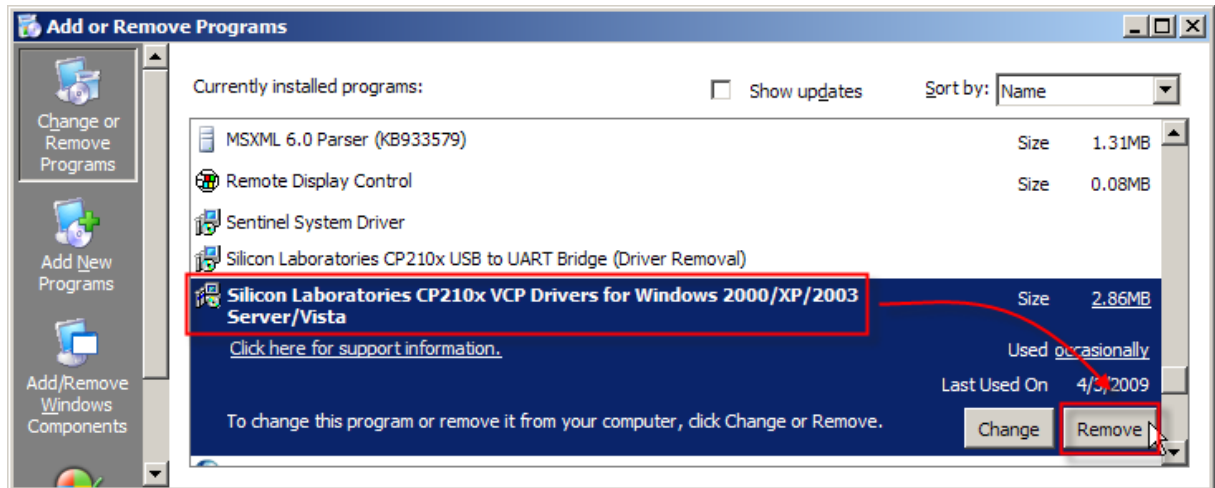
Note: If the existing driver is older than version 5.3, please follow [Remove Existing Setup File & Driver](#).



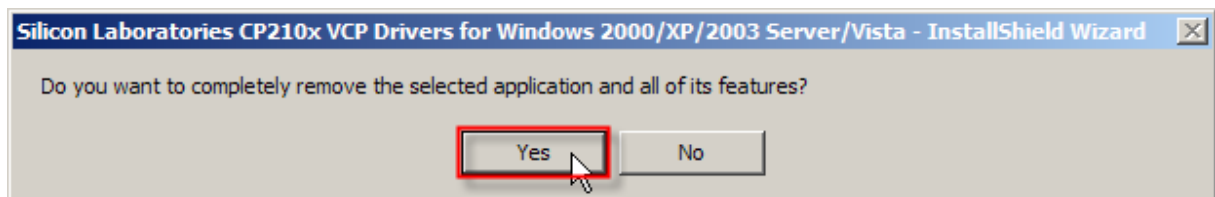
## REMOVE EXISTING SETUP FILE & DRIVERS

### FIRST, REMOVE SETUP FILE

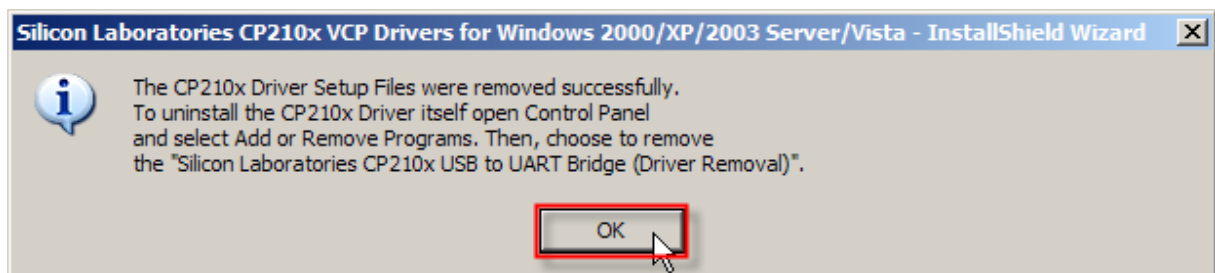
- 1) Select the setup file.
- 2) Click [Remove] to remove the setup file.



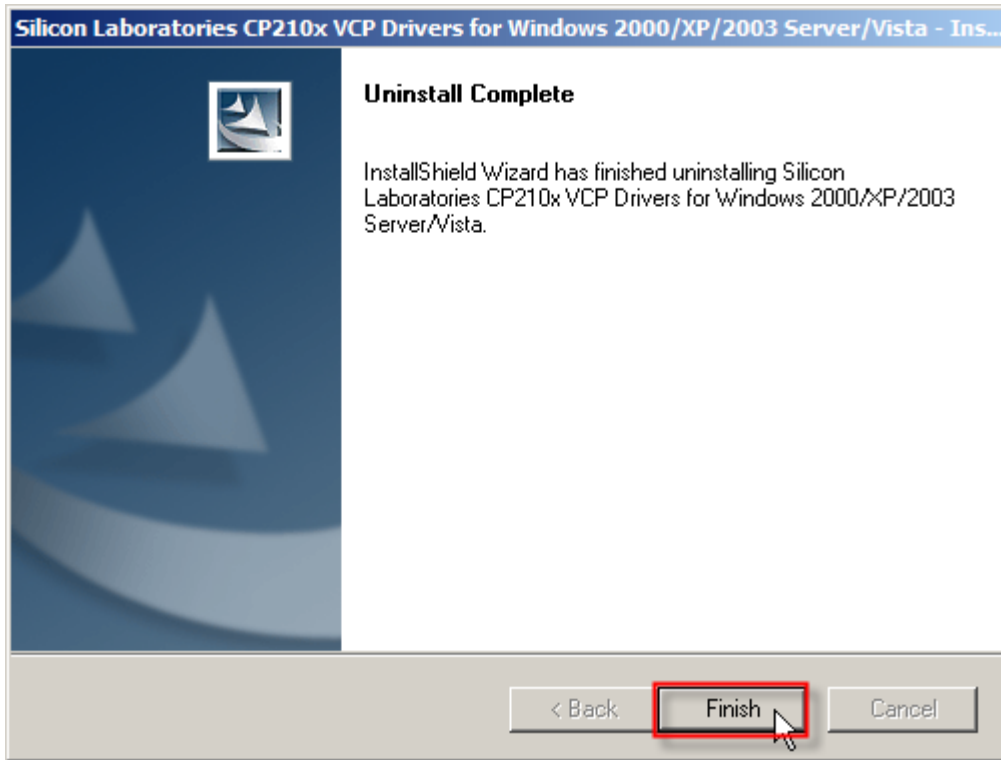
- 3) Wait for several seconds while uninstalling the setup file. Click [Yes].



- 4) Click [OK].

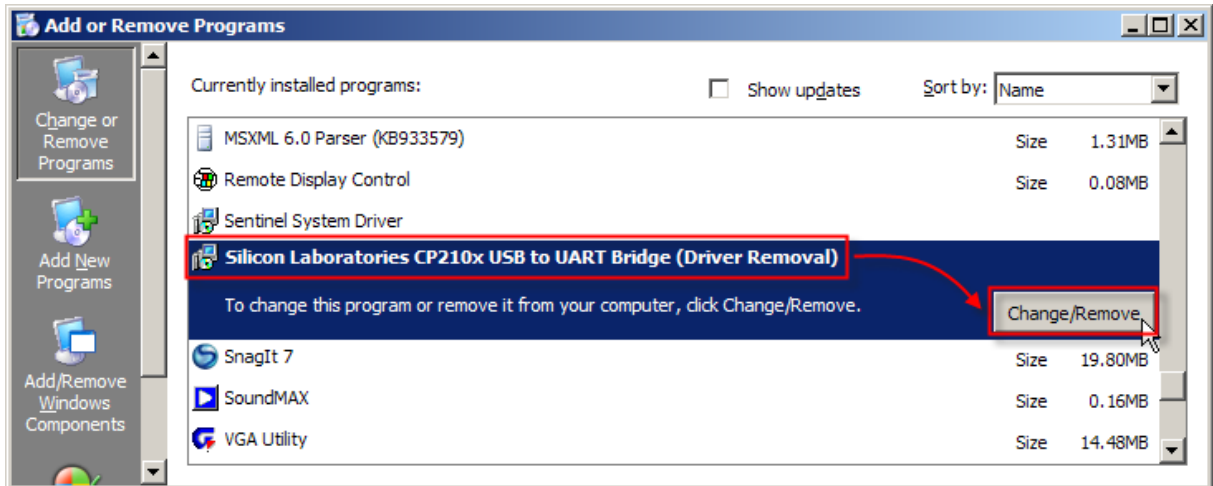


- 5) Click [Finish].

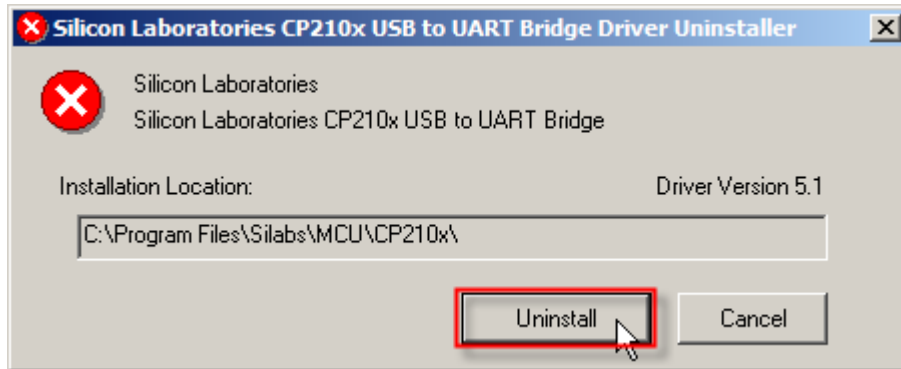


## SECONDLY, REMOVE DRIVERS

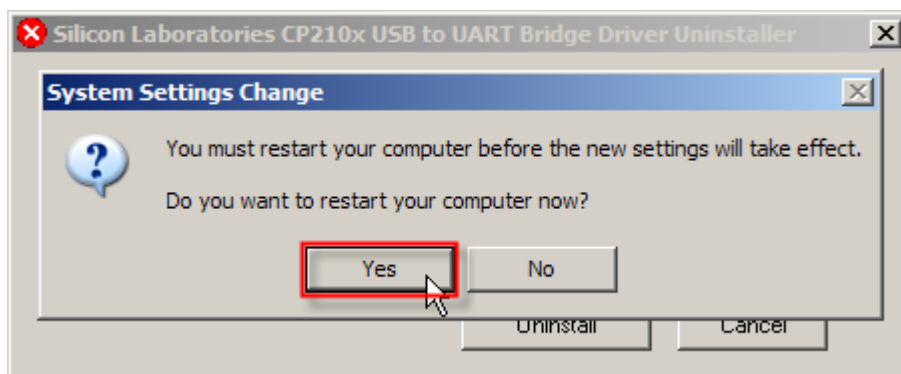
- 6) Select the driver.
- 7) Click [Change/Remove] to remove the drivers.



8) Click [Uninstall].



9) Click [Yes] to restart your computer.



Note: You must restart your computer before the new settings take effect.

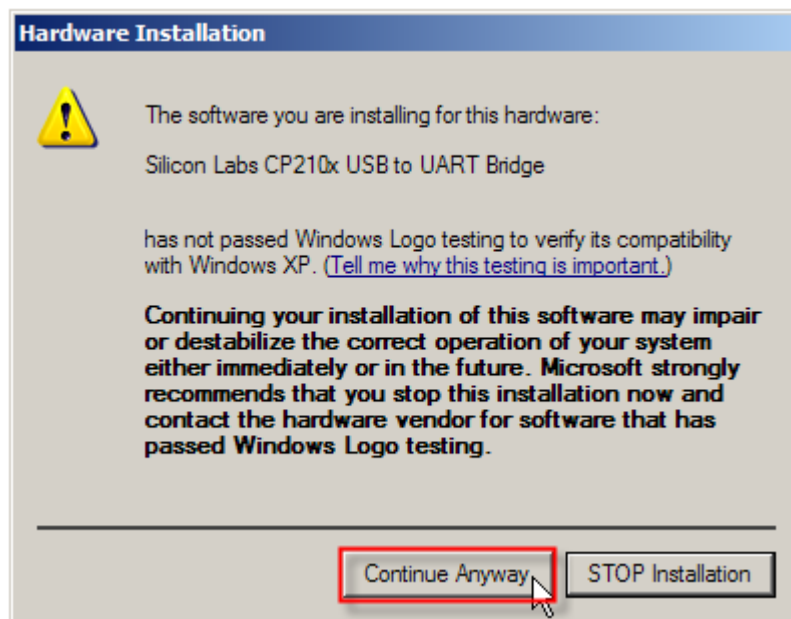


# USING USB VIRTUAL COM

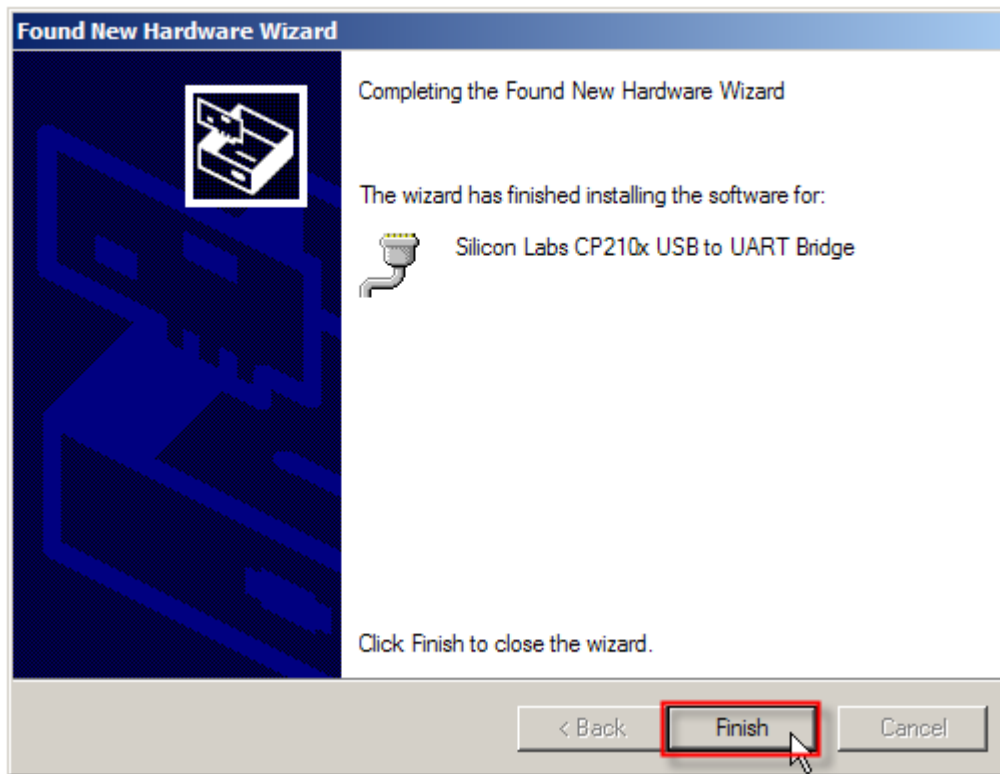
---

## CONNECT YOUR USB DEVICE

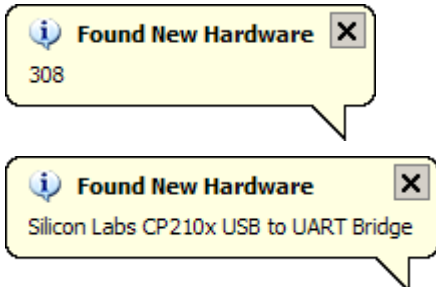
- 1) After having successfully installed the driver to your system, connect your USB device to PC.
- 2) Click [Continue Anyway] to confirm the hardware installation.



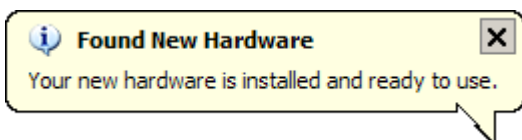
3) Click [Finish].



4) The system recognizes the new hardware as shown below.



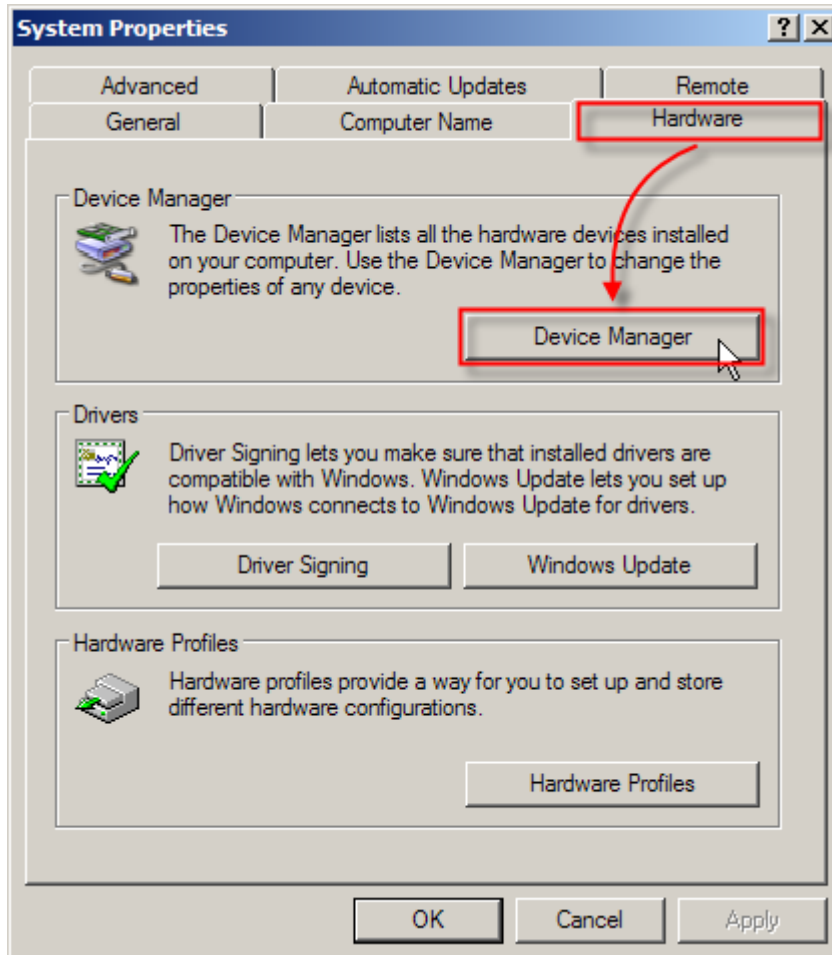
A few seconds later, another message is displayed to inform you that your device is ready for use.



## FIND OUT AVAILABLE COM PORTS

To find out which COM port is assigned to your USB device:

- 1) Go to **Start | Control Panel | System**.
- 2) Click on the Hardware tab.
- 3) Click [Device Manager].



- 4) Click to expand the list of [Ports (COM & LPT)].

